



**THE REPUBLIC OF AZERBAIJAN
MINISTRY OF TRANSPORT**



AZERBAIJAN – ITALY BUSINESS FORUM

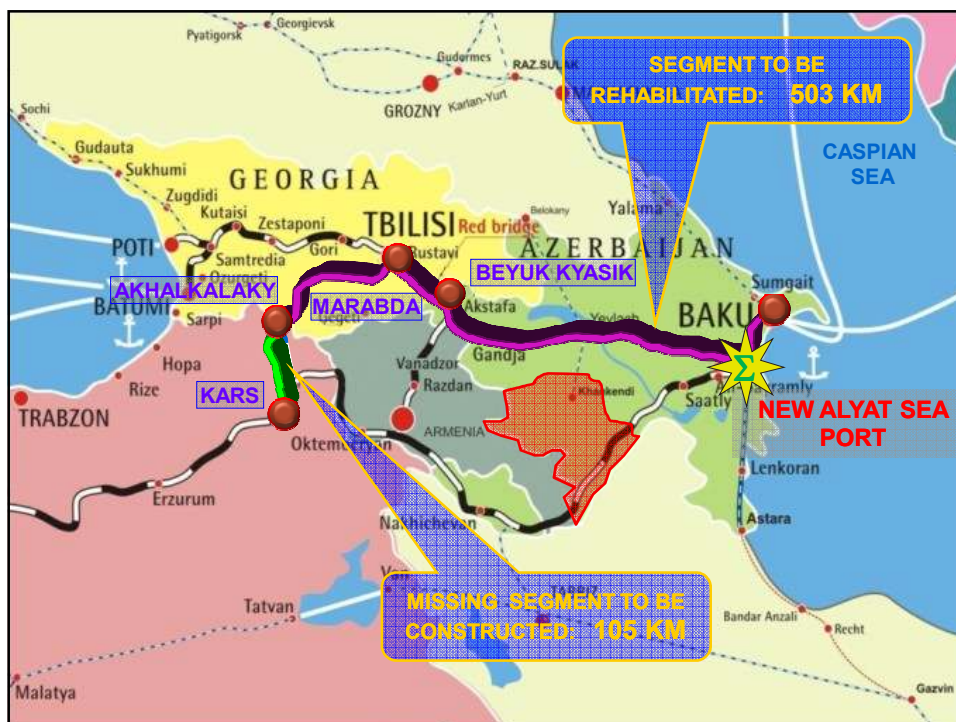
**TRANSPORT SYSTEM OF AZERBAIJAN: OPPORTUNITIES
AND PERSPECTIVES FOR GLOBAL LOGISTICS AS A BASE
FOR REGIONAL INTEGRATION.**

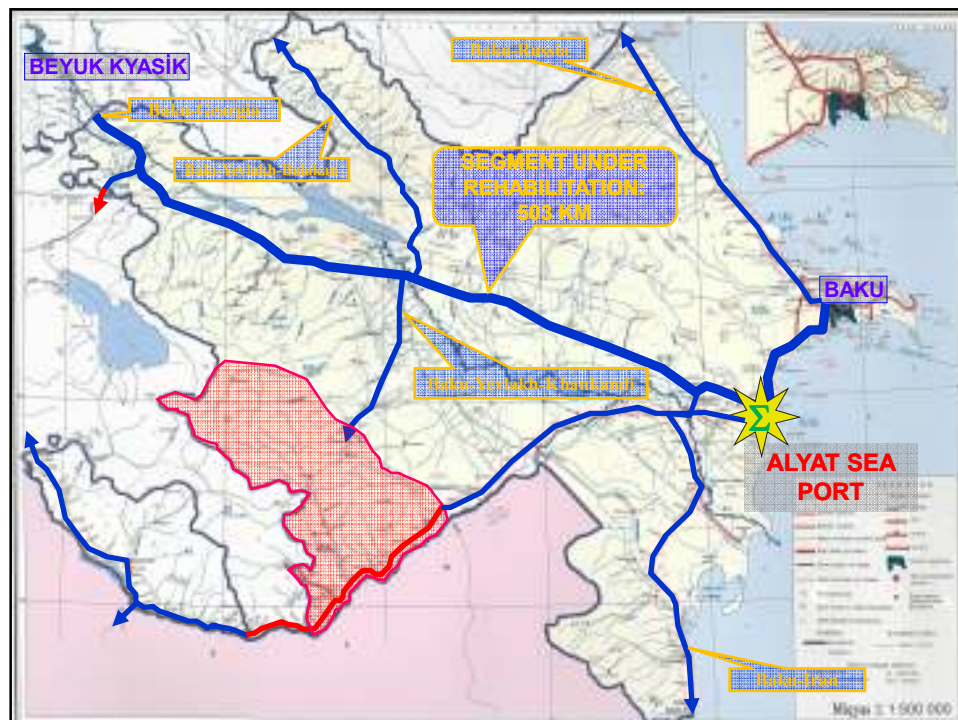
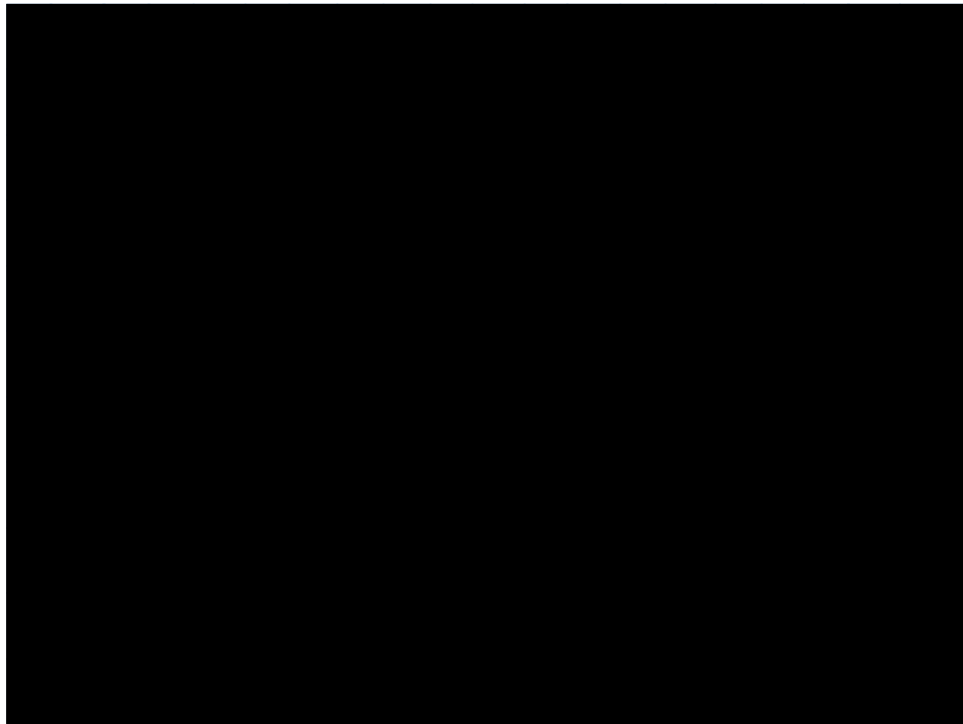
INVESTMENT PROJECTS.

November 13-14, 2013 / Baku, AZERBAIJAN

Haydar Turabov
Senior Counselor
Transport Policy and Economy Division

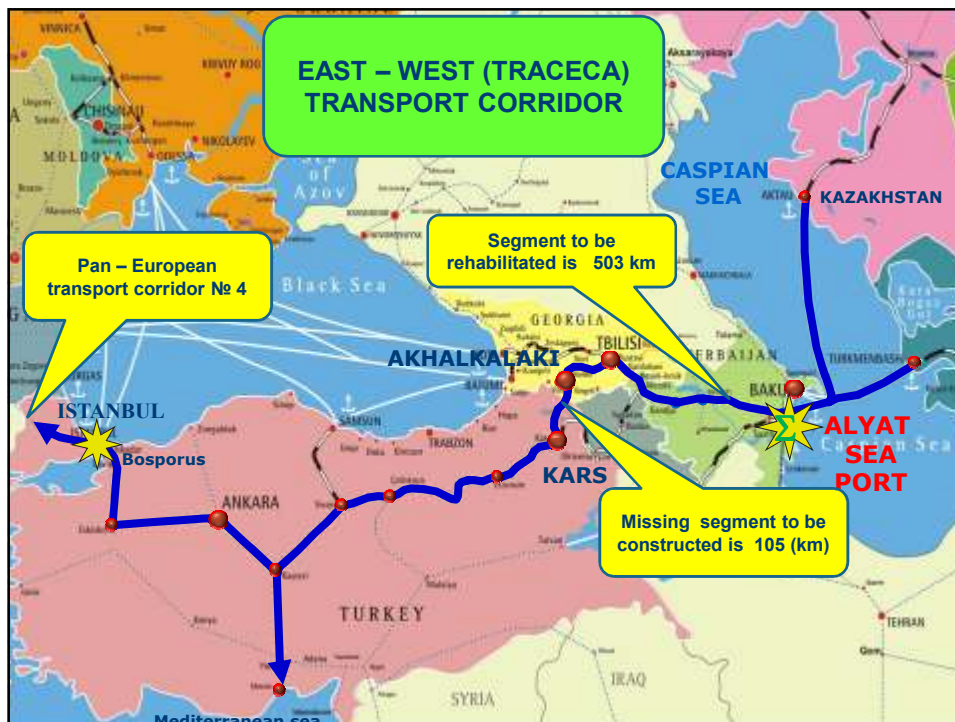


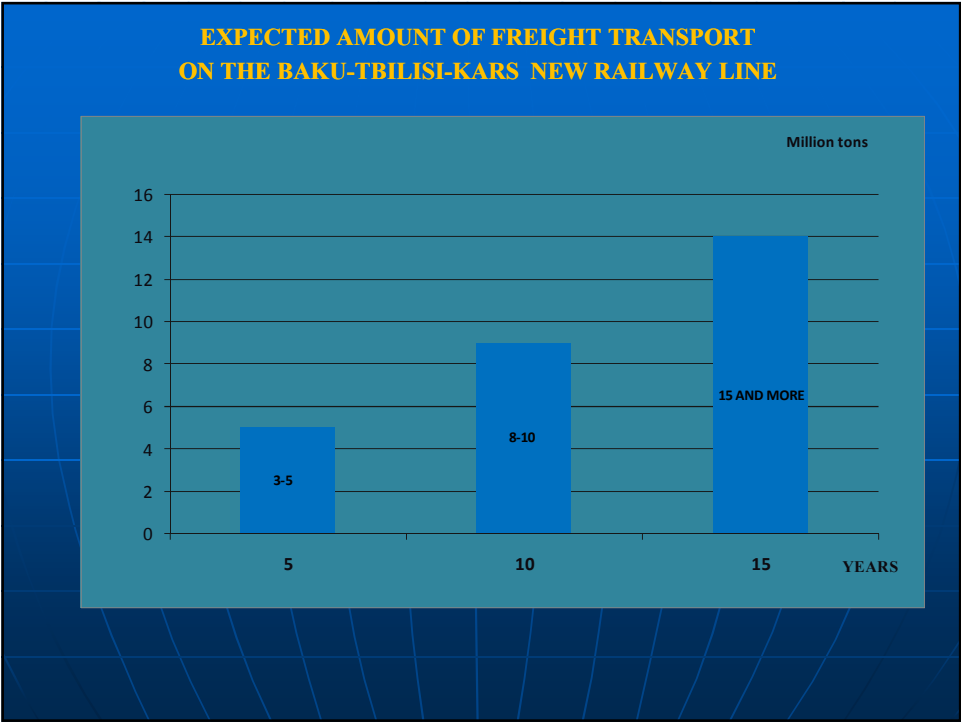




STATE PROGRAM ON RAILWAY SYSTEM DEVELOPMENT IN THE REPUBLIC OF AZERBAIJAN IN 2010-2014

- THE COMPLETE RECONSTRUCTION OF THE SURFACE OF RAILWAY;
- RECONSTRUCTION OF THE DIRECT POWER SUPPLY SYSTEM PASSING TO THE ALTERNATING POWER SUPPLY SYSTEM;
- RECONSTRUCTION OF SIGNALIZATION, COMMUNICATION AND AUTOBLOCKING SYSTEMS;
- RENOVATION OF ROLLING STOCK;
- ESTABLISHMENT OF CENTRALIZED MANAGEMENT SYSTEM;
- INCREASING OF THE SPEED OF TRAINS UP TO 140 KM/H;
- INCREASING OF TRANSPORTATION CAPACITY UP TO 35 %/







NEW BAKU INTERNATIONAL SEA TRADE PORT COMPLEX



NEW BAKU INTERNATIONAL SEA TRADE PORT COMPLEX

I stage (up to 10 mln. tons, 50 thousand TEU)

Terminals:	2
1 Dry cargo terminal	1
2 Ferry terminal	1
Berths:	8
Ferry berth:	2
Ro-Ro berth:	1
For dry cargo and containers:	4
Service berth:	1

II stage (up to 17 mln. tons, 150 thousand TEU)

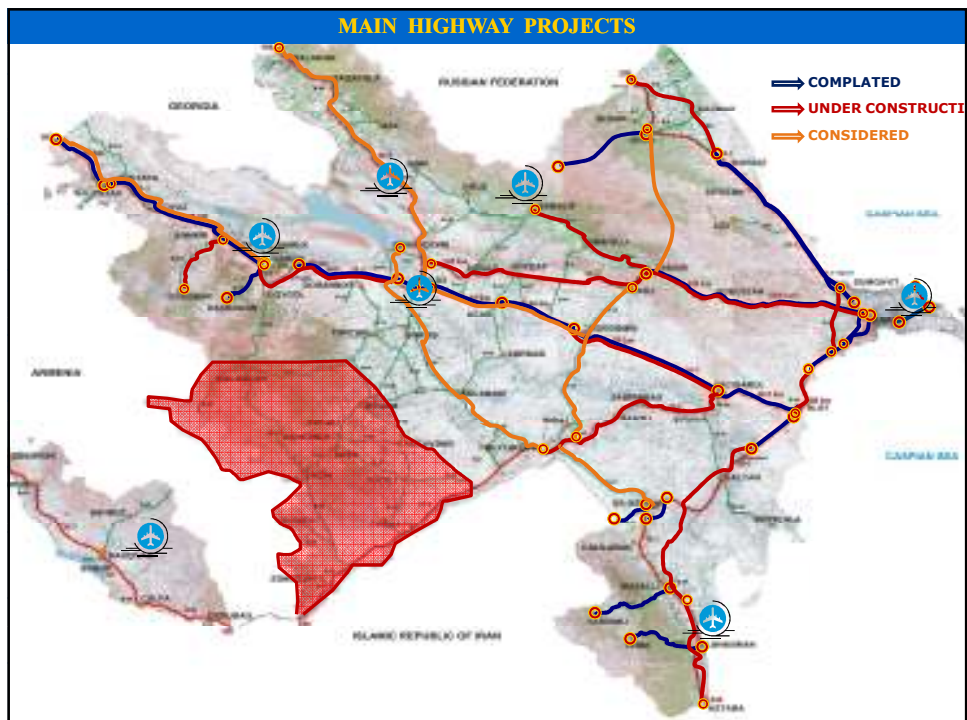
Terminals:	2
1 Dry cargo terminal	1
2 Ferry terminal	1
Berths:	6
Ferry berth:	2
For dry :	4

III stage (up to 25 mln. tons, 1 mln. TEU)

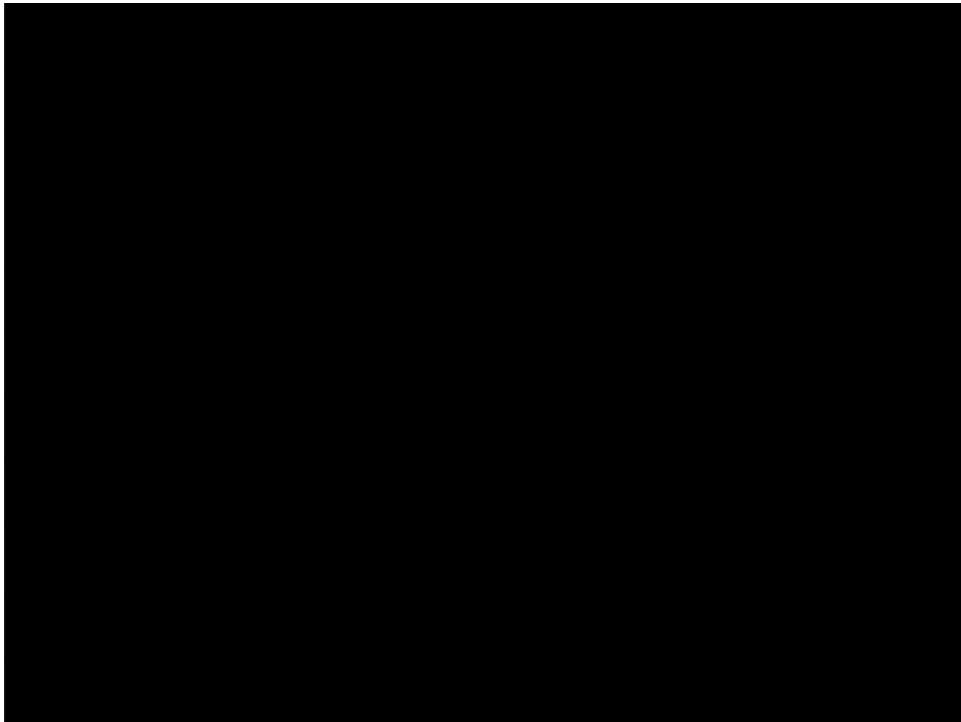
Terminal:	2
1 Container terminal:	1
2 Ferry terminal	1
Berths:	7
Ferry berth:	2
Dry cargo berth:	5



• ENLARGEMENT THROUGH ACCESSION TO “VIKING” PROJECT



SHAMAKHI – GUBA HIGHWAY PROJECT



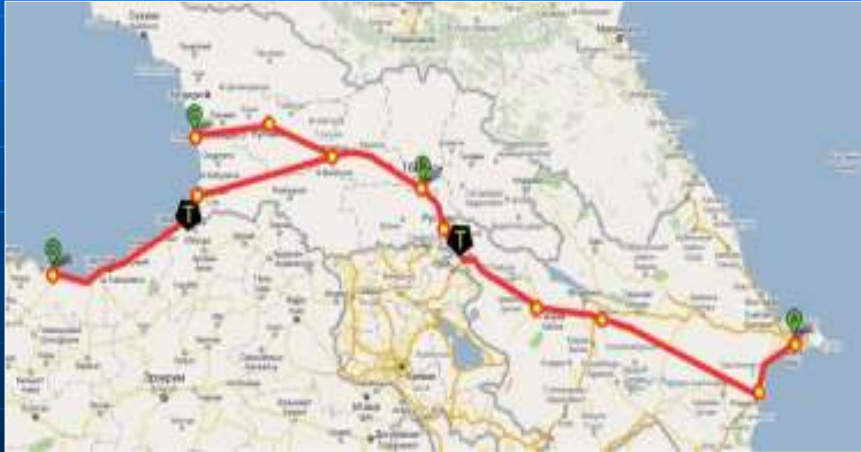
MODEL HIGHWAY INITIATIVE

South Caucasus section MHI :

Trabzon - Sarpi (Georgia/Turkey BCP) – Batumi – Tbilisi – Krasny Most (Georgia/Azerbaijan BCP) - Baku

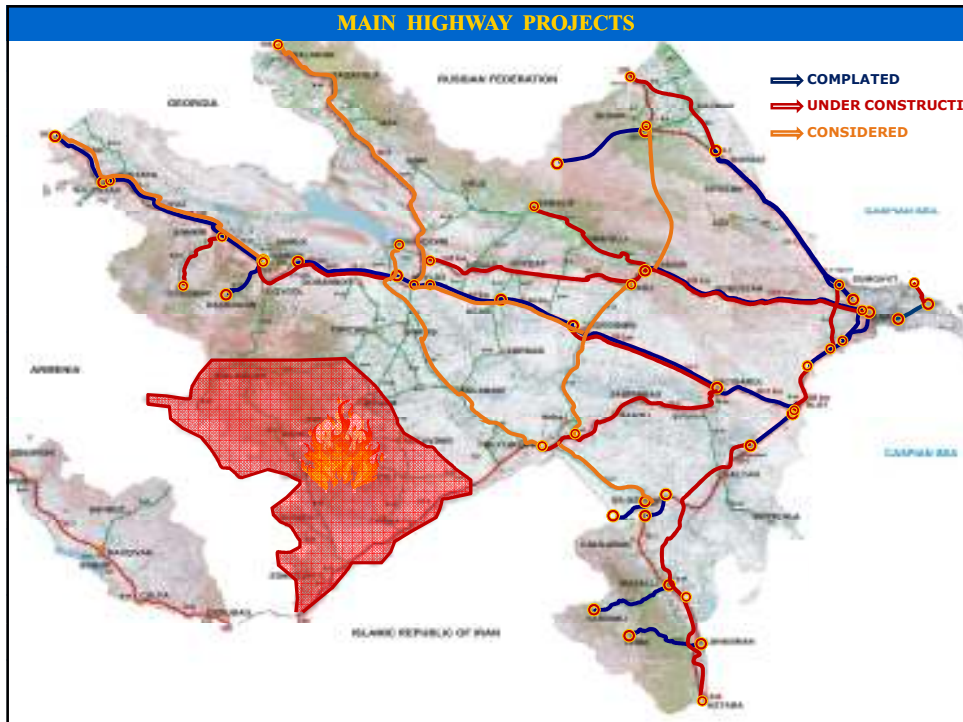
Possible extentions:

Baku port (BCP) - Turkmenbashi port (BCP) - Ashgabat



TRANSPORT OPERATIONS INTELLIGENT MANAGEMENT SYSTEM







MINISTRY OF TRANSPORT
REPUBLIC OF AZERBAIJAN



THANK YOU
FOR THE ATTENTION

Haydar Turabov
Senior Counselor
Transport Policy and Economy Division

LAST 10 YEARS

AVERAGE ANNUAL GROWTH OF TRANSPORT SECTOR:

- FREIGHT TRANSPORT – 3.8 % ;
- TRANSIT TRANSPORT - 8.6 %;
- PASSENGER TRANSPORT - 6.1 %.

SHARE OF TRANSPORT SECTOR ON GDP CONSIST OF 5.6 %

THE INVESTMENTS TO THE TRANSPORT SECTOR IN THE LAST 5 YEARS
WERE 14.5 BILLION USD

“Marmara Project”

Length	76,3 km
including:	
Underwater part	1,4 km
Tunnel maximum deepness	56,0 m
Number of stations	40
Passenger transportation:	
Existing	10 000 / hour
Considered	75 000 / hour
Maximum speed	100 km/hour
Expected average speed	45 km/hour
Interval between two trains	120-600 seconds
Expected number of trains	440
Number of railway lines	Two lined
Required time:	
At present, by the railway + ferry-boat + railway	185 minutes
After implementation of the project	104 minutes

